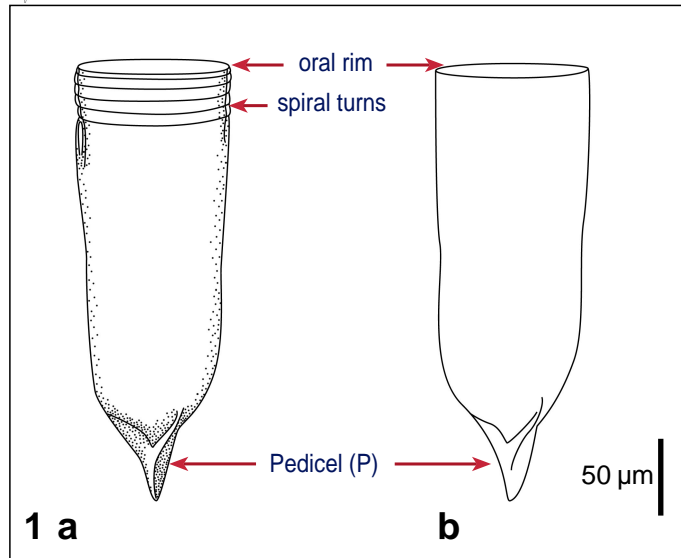


Favella ehrenbergii (Claparède & Lachmann, 1858) Jörgensen, 1924



Key features

Lorica elongate-cylindrical, bowl rounded aborally, highly variable in length, hyaline, with closed pedicel, oral end of the lorica with few spiral turns, 2 macronuclei

Measurements

Length (lorica): 300 (150-400) µm
Oral diameter (lorica): 100 (50-125) µm
No of EPk + IPk: 16
Ma diameter: ? µm
Biovolume: ? µm³

Movement

-

Food

-

Ecological data

Temperature: 16-18 °C optimum
Salinity: n/a

References

Entz G Jr 1909; Jörgensen E 1924; Kofoed CA & Campbell SA 1929; Kuylenstierna M & Karlson B 1996-2000 (http://www.marbot.gu.se/SSS/others/Favella_ehrenbergii.htm); Laval-Peuto M 1981; Marshall SM 1969; Protist Information Server 1995-2001 (<http://protist.i.hosei.ac.jp/PDB/Galleries/Nakamachi/Favella/index.html>)

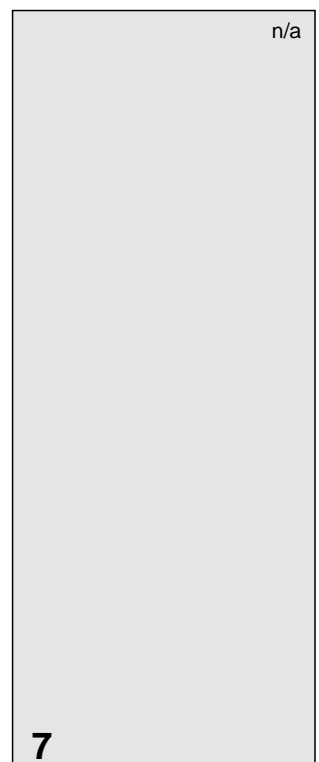
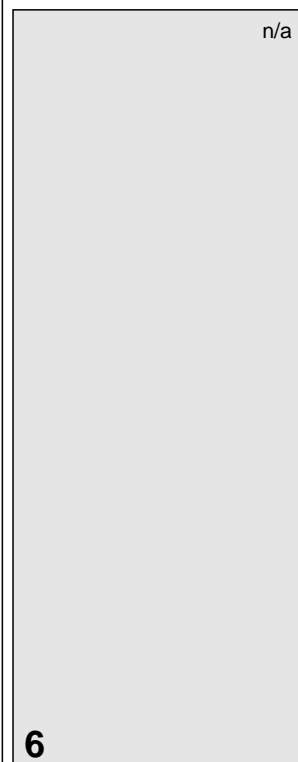
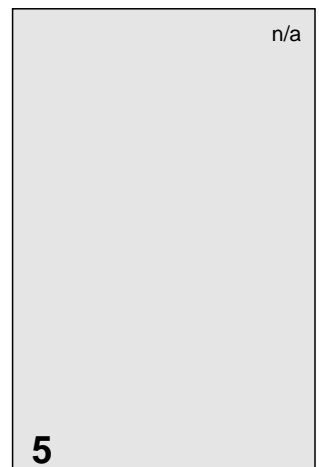
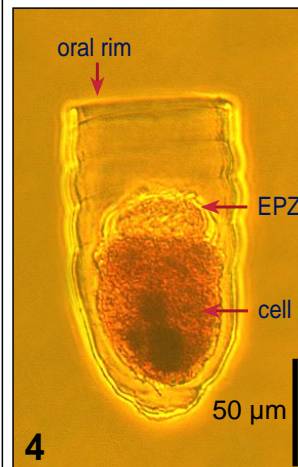
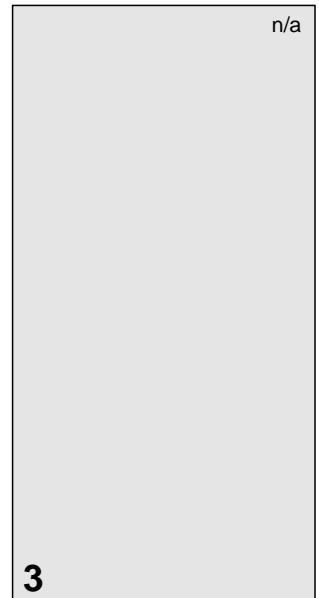
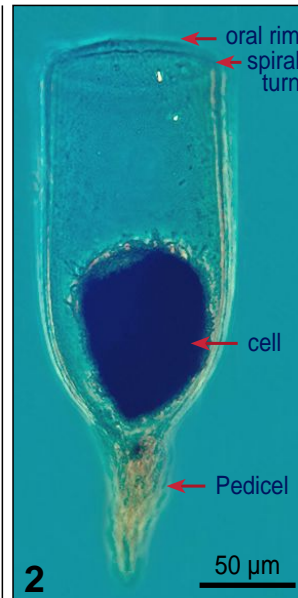
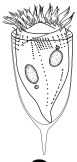


Fig 1 Line drawings of lorica morphology: a. After Marshall, 1969; b. After Kofoed & Campbell, 1929. **Fig 2** Lugol's fixed cell in phase contrast. **Fig 3,4** Lugol's fixed cells, lateral views. (3. . .). 4. Replacement (coxielliform) lorica, showing spirals and ciliate cell. (**Fig 5** Lugol's fixed and DAPI stained cell, illustrating shape and location of the macronuclei.)



Favella ehrenbergii (Claparède & Lachmann, 1858) Jörgensen, 1924

Species description

Lorica long, cylindrical, highly variable in length, bowl sometimes slightly expanded below the middle, **rounded aborally** and joined by wings to a **short, blunt pedicel** (Fig 1,2); suboral spiral sometimes present (Fig 1,2); wall thick, **hyaline**; lorica 300 (150-400) µm long, oral diameter 100 (50-125) µm; 3 different lorica forms: **favella form, decipiens form, coxliella form** (replacement lorica, Fig 4), all 3 forms have an average oral diameter of 104 µm, with or without pedicel.

Oral cavity acentric, shifted towards the ventral surface.

No data about infraciliature available.

Two bean-shaped macronuclei, probably two micronuclei.

Similar species

Favella franciscana (oral rim denticulate, bowl with nuchal constriction), *F. markusovzkyi* (pedicel more slender, bowl narrower), *F. meunieri* (aboral region has conical shape and no wings), *F. panamensis* (bowl more cylindrical), *F. serrata* (oral rim denticulate, bowl more conical).

List of synonyms

1858 *Tintinnus ehrenbergii* Claparède & Lachmann
Mem Inst Genev 5: 203, Pl 8, Figs 6, 7.

- was affiliated with: *Tintinnus*, *Cyttarocyclus*, *Ptychocyclus*, *Favella*, *Coxliella*, for further synonyms and details see Kofoed & Campbell (1929).

- *Coxliella annulata* (replacement lorica), *Coxliella decipiens* (decipiens form)

Taxonomical remarks

No data about infraciliature and nuclear apparatus are available. Species description thus based solely on lorica morphology.

Notes