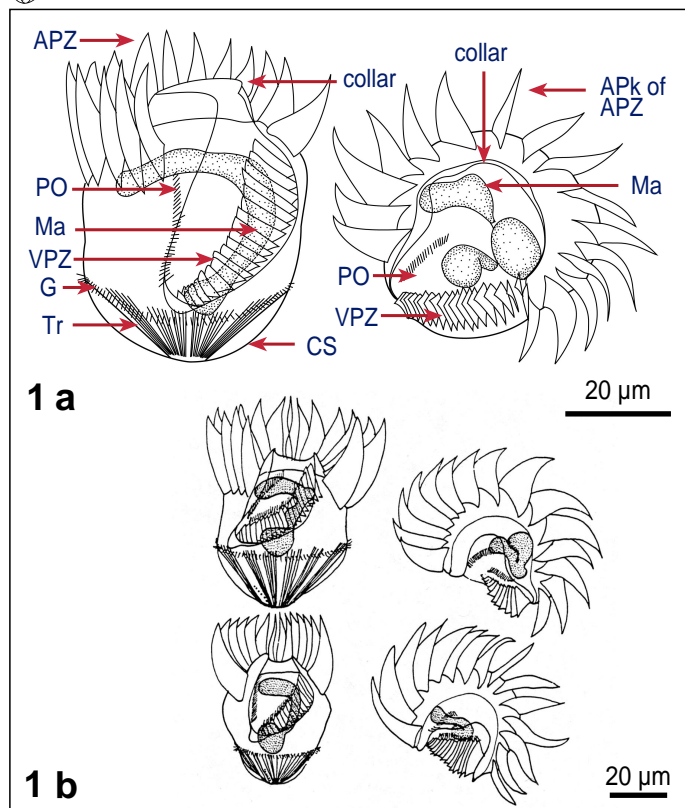


Strombidium capitatum (Leegaard, 1915) Kahl, 1932



Key features

Cell squat-shaped (truncate); conspicuous peristomial collar; girdle kinety subequatorial, divides conical bottom from hemispherical top; oral cavity wide and deep, APZ and VPZ clearly separated, VPZ distinct and extends 1/3 down the side of the cell; one macronucleus, shape variable, but generally elongate

Measurements

Length:	40 (30-70) µm
Width:	40 (30-55) µm
No of APk:	15 (14-16)
No of VPk:	19 (14-23)
Ma length:	40 (30-70) µm
Biovolume:	40,000 µm ³

Movement

Rotates slowly, interrupted by short jumps

Food

Mixotrophic, chloroplast retention, nanoflagellates

Ecological data

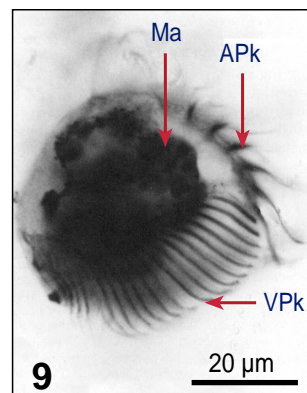
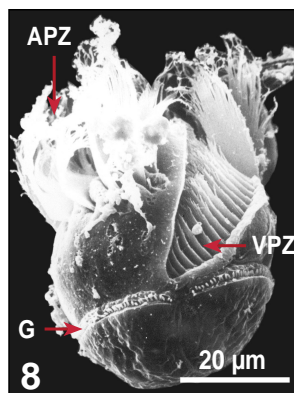
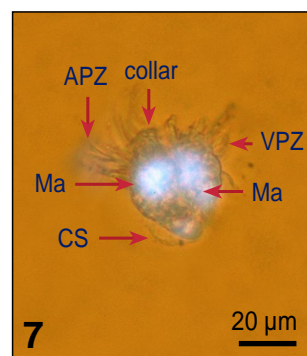
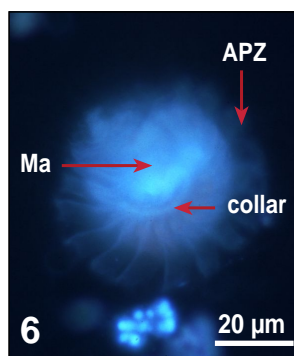
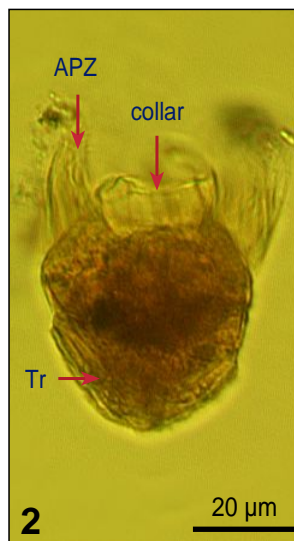
Temperature: 5-24 °C; eurythermal

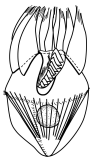
Salinity: 30-32 ‰

References

Kahl A 1932; Leegaard C 1915; Montagnes DJS et al. 1988

Fig 1 Line drawings of protargol stained cells: a. Showing kineties, oral structures, and nucleus; b. An indication of phenotypical variability within the species. **Fig 2-5** Lugol's fixed cells, showing trichites, collar, APZ, and prominent VPZ. **Fig 6,7** Lugol's fixed and DAPI stained cells, illustrating nuclear shape: 6. Apical view; 7. Lateral view. **Fig 8** SEM of Lugol's fixed cell. **Fig 9** Protargol stain, showing APks and VPks, anterolateral view.





Strombidium capitatum (Leegaard, 1915) Kahl, 1932

Species description

Body squat in shape (**truncate**), wide-conical; 40 (30-70) μm long and 40 (30-55) μm wide; **conspicuous peristomial collar** (Fig 1,2-5,7,10,13), deep ventral groove (Fig 1,3,8,9,13); trichites distinct, possibly in bundles (Fig 1,2).

Oral cavity wide and deep (Fig 1,2,8); 15 (14-16) APks and 19 (14-23) VPks; **APZ and VPZ clearly separated** (Fig 1,3,8,9,13); paroral ciliated; **VPZ runs distinctly about 1/3 down the side of the cell** (Fig 1,3,8).

Girdle kinety subequatorial (Fig 1,8), with stubby cilia, surrounding the cell; ventral kinety extends in longitudinal groove from the girdle to the posterior pole, consists of 5-10 ciliated kinetosomes (Fig 1).

One macronucleus, shape variable but mostly elongate and shaped like a question mark (Fig 1,6,7,11,12).

Similar species

S. viride (freshwater, girdle supraequatorial), *S. calkinsi* (Ma ovoid, 2 long dorsal polykineties), *S. lagenula* (10 APks, 6 VPks).

List of synonyms

-

Taxonomical remarks

-

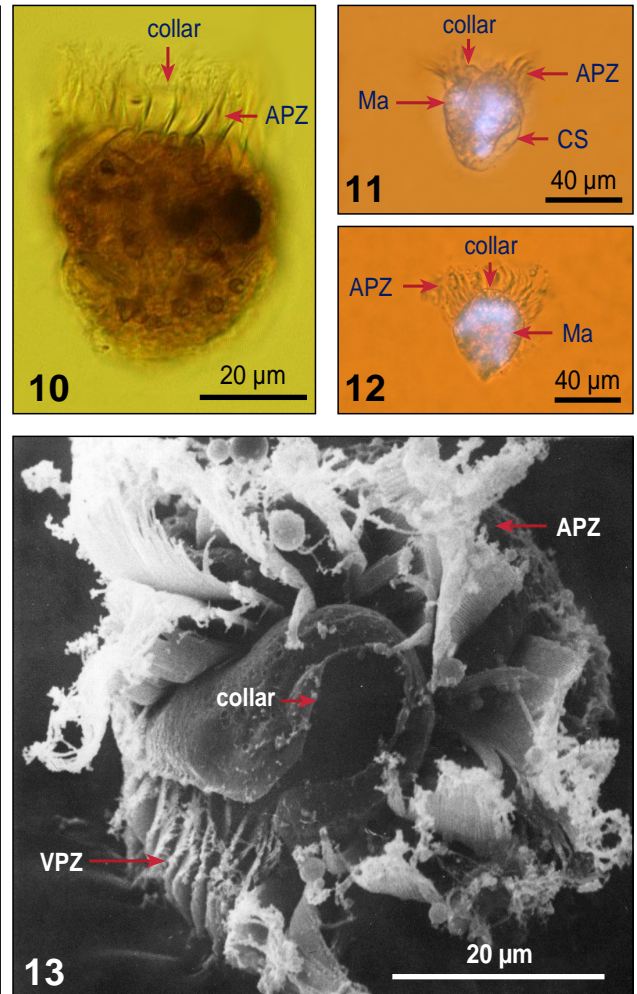


Fig 10 Lugol's fixed cell. **Fig 11,12** DAPI stained cells: 11. Ventral view; 12. Dorsal view. **Fig 13** SEM image with details of the oral region.

Notes