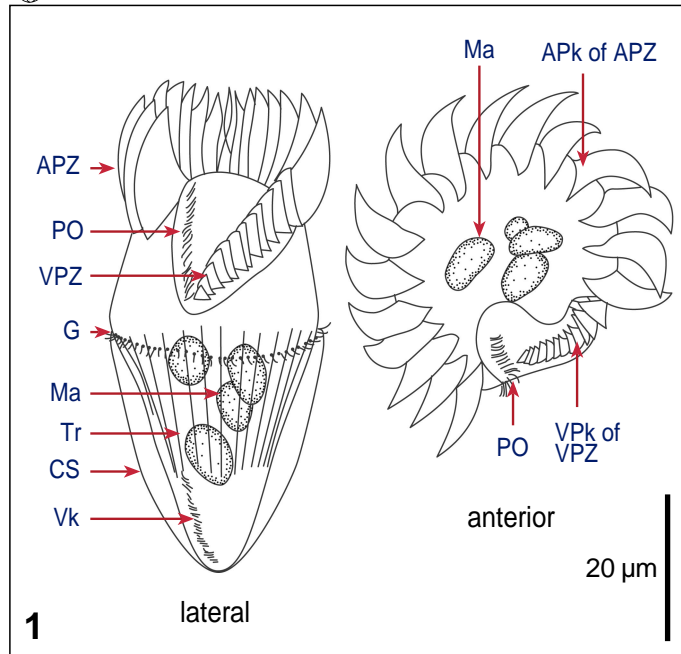


# *Strombidium chlorophilum* Montagnes et al., 1988



## Key features

Cell conical; APZ and VPZ not distinctly separated; girdle kinety supraequatorial; ventral kinety restricted to posterior third; 1-5 macronuclear fragments, ovoid and centrally located

## Measurements

Length: 50 (40-60) µm  
Width: 30 (20-35) µm  
No of APk: 16 (14-18)  
No of VPk: 13 (10-16)  
Ma diameter: 4 x 6 (4-6 x 5-9) µm  
Biovolume: 20,000 µm<sup>3</sup>

## Movement

-

## Food

Mixotrophic, chloroplast-retention; autotrophic flagellates

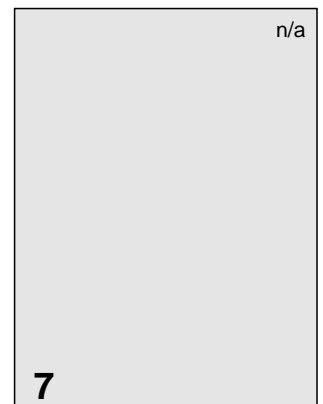
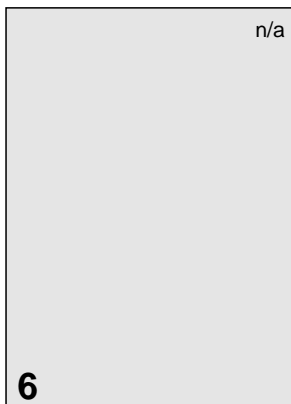
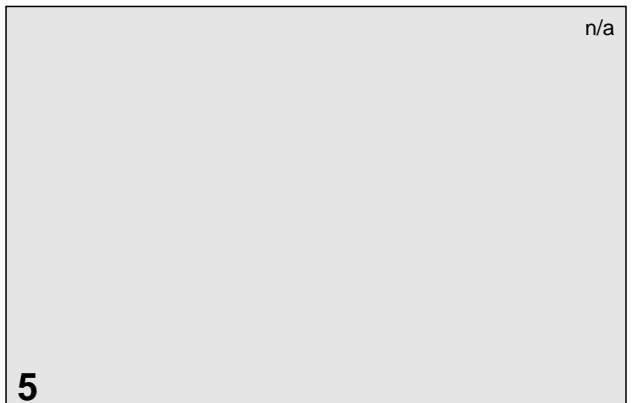
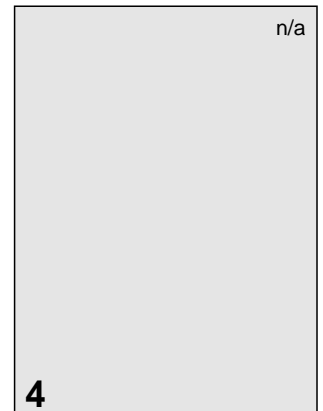
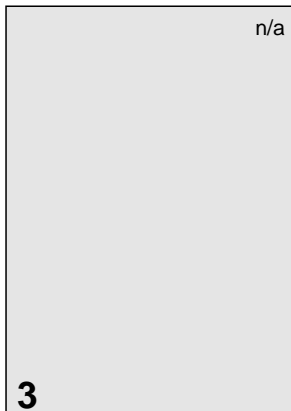
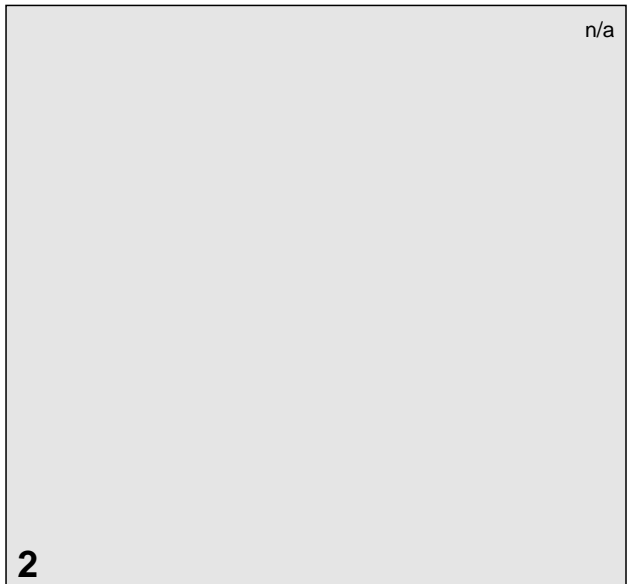
## Ecological data

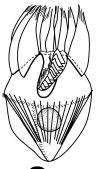
Temperature: 15 °C  
Salinity: 26-32 ‰

## References

Montagnes DJS et al. 1988

**Fig 1** Line drawings of protargol stained cells, showing kineties, oral structures and nuclei. (**Fig 2,3** Lugol's fixed cells. **Fig 4** Lugol's fixed and DAPI stained cell, illustrating nuclear shape. **Fig 5** SEM of Lugol's fixed cell. **Fig 6,7** Protargol stains.)





# *Strombidium chlorophilum* Montagnes et al., 1988

## Species description

**Body conical**, 50 (45-60)  $\mu\text{m}$  long and 30 (20-35)  $\mu\text{m}$  wide; trichites insert above girdle, extend posteriorly (Fig 1); live cells can be green due to chloroplast retention - stain dark with Lugol's.

Oral cavity shallow; one ciliated paroral, at the right side of the oral groove; **APZ and VPZ not distinctly separated**, VPks lie in a shallow ventral groove (Fig 1).

**Girdle kinety supraequatorial**, with stubby cilia, completely surrounding cell; **ventral kinety restricted to posterior end**, with 7-15 ciliated monokinetids (Fig 1).

**1-5 macronuclear fragments, ovoid**, all approximately equal in size (4-6 x 5-9  $\mu\text{m}$ ), **centrally located** (Fig 1).

## Similar species

*Strombidium wulffi* (about 18 macronucleus fragments), *S. conicum* (longer ventral kinety, larger cell, one macronucleus, anterior protuberance), *S. oculatum* (one macronucleus, anterior protuberance), *S. tintinnodes* (one macronucleus)

## List of synonyms

-

## Taxonomical remarks

*S. chlorophilum*, *S. conicum* and other undescribed but very similar species may form a species complex.

## Notes