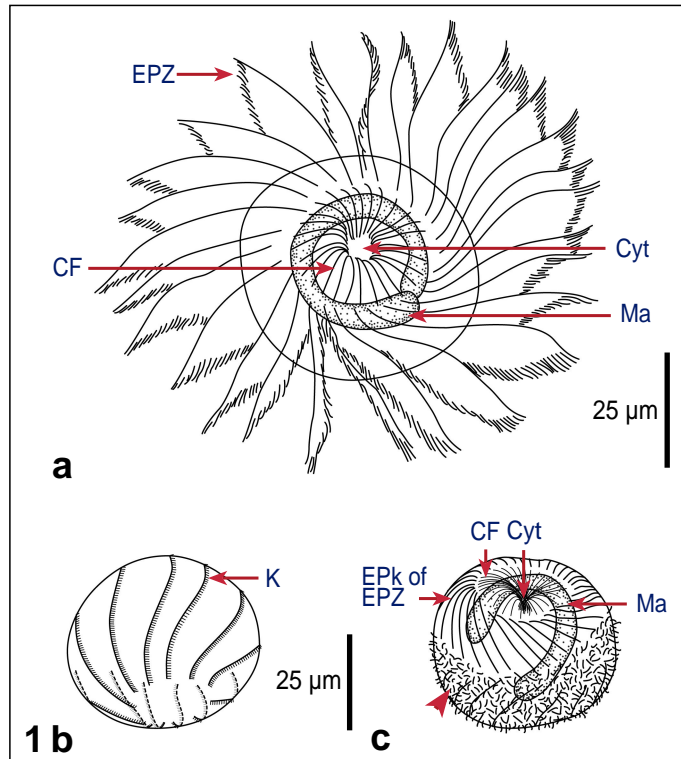


Strobilidium sphaericum Lynn & Montagnes, 1988



Key features

Cell subspherical; IPks absent; 10 somatic kineties radiate from the posterior pole; one C-shaped macronucleus, anterior located

Measurements

Length:	60 (40-70) µm
Width:	50 (40-60) µm
No of EPk:	26 (24-30)
No of IPk:	0
Ma thickness:	5 (3-8) µm
Biovolume:	80,000 µm ³

Movement

-

Food

-

Ecological data

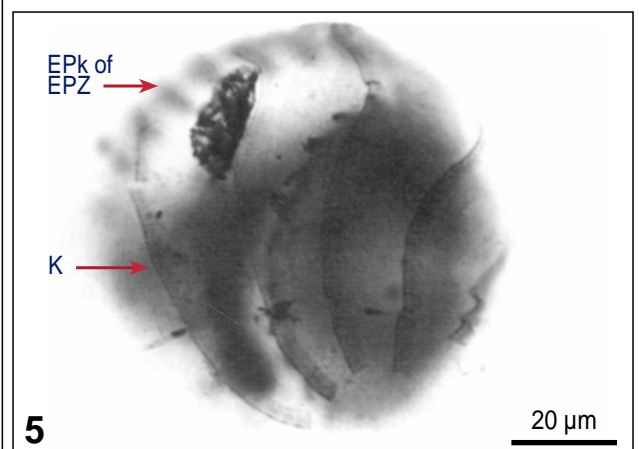
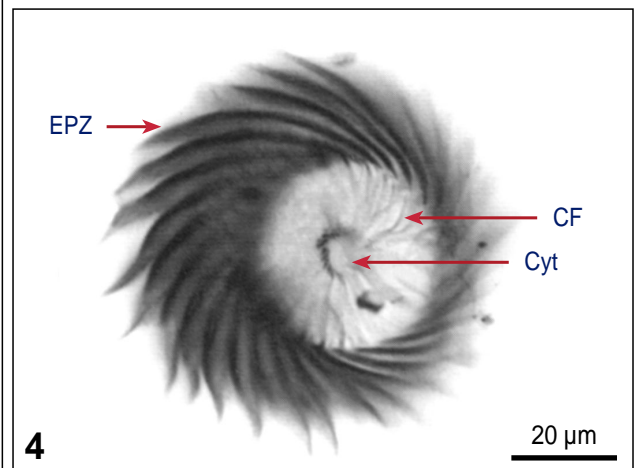
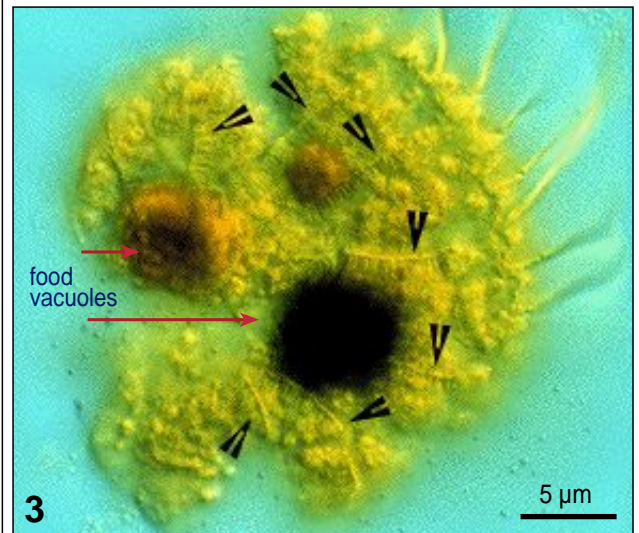
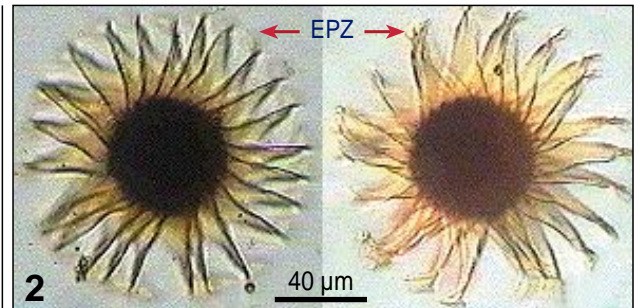
Temperature: 8-18 °C

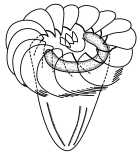
Salinity: 31-34 ‰

References

Lynn DH & Montagnes DJS 1988; Kuylenstierna M & Karlson B 1996-2000 (www.marbot.gu.se/SSS/others/Strobilidium_sphaericum.htm)

Fig 1 Line drawings of protargol stained cells, showing kineties, oral structures and nucleus: a. Apical view; b. View from postero-lateral; c. lateral view. **Fig 2,3** Lugol's fixed cell (Pictures courtesy of M. Kuylenstierna: www.marbot.gu.se/SSS/others/Strobilidium_sphaericum.htm): 2. Apical and antapical view; 3. Ruptured cell, showing kinty fragments (arrowheads). **Fig 4,5** Protargol-stained cells: 4. Apical view, showing oral structures; 5. postero-lateral view showing somatic kineties.





Strobilidium sphaericum Lynn & Montagnes, 1988

Species description

Body subspherical, 60 (40-70) μm long and 50 (40-60) μm wide (Fig 1,2,4,5); in protargol stains, the cell surface may be covered by darkly stained structures (possibly extrusomes or ectosymbiotic bacteria, Fig 1c, arrowhead).

Oral cavity centric, with cytopharyngeal fibers (CF) that spiral centripetally into the depression; 26 (24-30) EPks (Fig 1,2,4), **IPks absent** (Fig 1,4).

10 (9-11) somatic kineties, ciliated, and the cilia are directed to the right when viewed aborally; cilia partly covered by a cytoplasmic flap; the **somatic kineties radiate from the posterior pole** and extend anteriorly to the EPZ (Fig 1,3,5).

One macronucleus, C-shaped (3-8 μm thick in diameter), **anterior located** below the EPZ and around the oral cavity (Fig 1).

Similar species

Strobilidium spiralis (fewer somatic kineties with different course, 13 IPks, one side of the cell flattened); *S. neptuni* (fewer somatic kineties with different course, 11 IPks, one side of the cell flattened).

List of synonyms

-

Taxonomical remarks

Petz and Foissner (1992) defined the spiralling of the somatic kineties at the posterior end as distinguishing character for the genus *Strobilidium*, and thus transferred all but one species to the genus *Rimostrombidium*. We do not follow this suggestion but consider the covering of the somatic cilia by a cytoplasmic flap as diagnostic character for the genus *Strobilidium* (Lynn & Montagnes 1988).

Notes