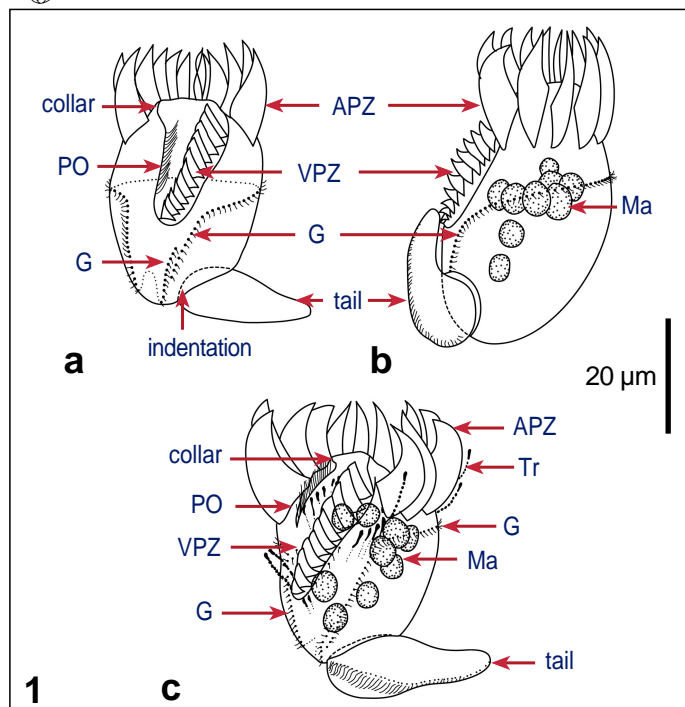


# *Tontonia gracillima* Fauré-Fremiet, 1924



## Key features

Cell semi-oval; distinct peristomial collar; a contractile appendix ('tail'), inserting in a characteristic indentation - may be lost during fixation, remaining cell reveals a posterior-lateral indentation; APZ distinctly separated from VPZ; multiple, spherical macronuclei arranged in a sickle-shape; girdle kinety surrounds the cell and is characteristically arched

## Measurements

Length:	60 (30-90) µm
Width:	35 (20-45) µm
No of APk:	10-20
No of VPk:	10-30
Biovolume:	20,000 µm <sup>3</sup>

## Movement

Slow swimming with tail extended (3-5 cell lengths); when disturbed the tail contracts, the cell then swims off in a different direction, extending the tail behind it

## Food

Dinoflagellates, chrysophytes, nanoflagellates

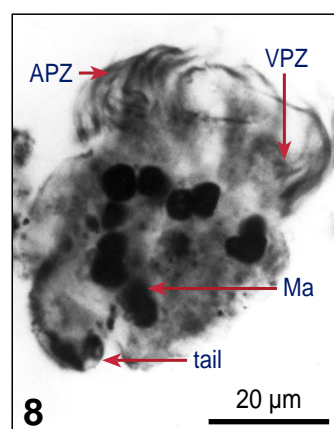
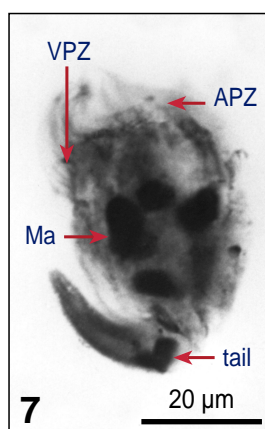
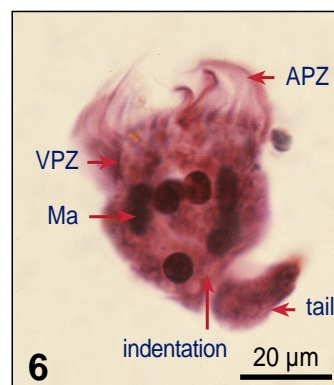
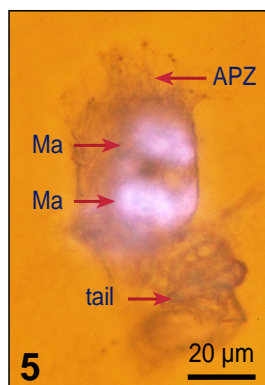
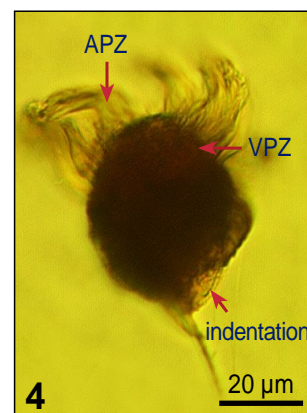
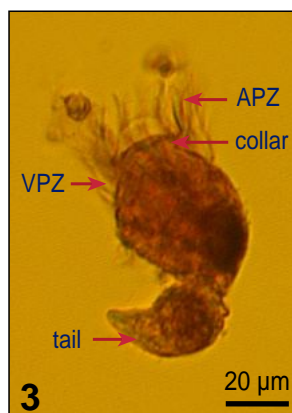
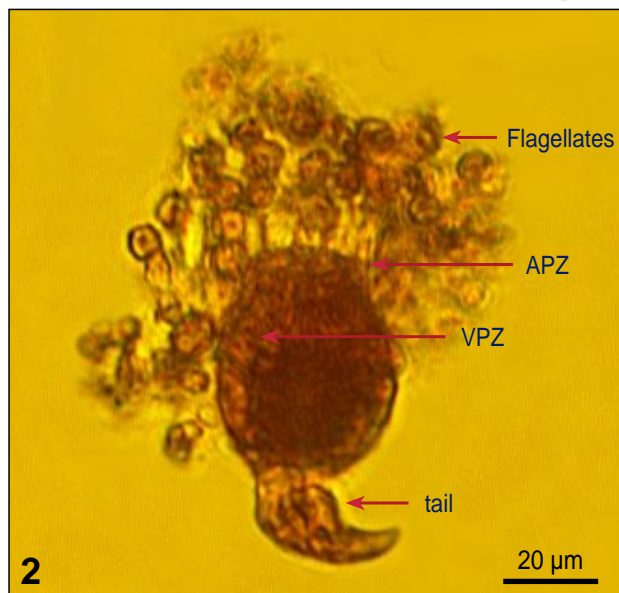
## Ecological data

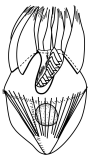
Temperature: 4-18 °C  
Salinity: 30-32 ‰

## References

Alekperov IK & Mamayeva NV 1992; Fauré-Fremiet E 1924; Kahl A 1932; Lynn DH et al. 1988; Protist Information Server 1995-2001 (<http://protist.i.hosei.ac.jp/PDB/Images/Ciliophora/Tontonia/index.html>)

**Fig 1** Line drawings of protargol impregnated cells: a. Ventral view, indicating complex course of girdle kinety; b. Left lateral view; c. Ventral left view, with ejected trichites (Tr) and tail. **Fig 2-4** Lugol's fixed cells: 2. Ventral left view; 3. Dorsal left view; 4. Ventral view, tail lost during fixation (indentation). **Fig 5** Lugol's fixed and DAPI stained cell, illustrating nuclear shape. **Fig 6-8** Protargol stains: 6,7. Left lateral side; 8. Ventral left view.





# *Tontonia gracillima* Fauré-Fremiet, 1924

## Species description

Body **semi-oval**, 30-90 µm long and 20-45 µm wide; **peristomial collar distinct** (Fig 1,3,9); **contractile "tail"** - length (contracted) 25-60 µm (extended) 250-300 µm, with dark staining fibres (Fig 1-3,5-8); **tail inserts in a distinct posterior-lateral indentation** (Fig 1,4,6,9,10); trichites at the base of the APks and along the margin of the oral cavity (Fig 1c).

**Oral cavity shallow but wide** (Fig 1,2); **APZ distinctly separated from VPZ**; 10-20 APks and 10-30 VPks; paroral runs on the right lip of the oral cavity (Fig 1).

**Girdle kinety surrounds the cell, characteristically arched** (Fig 1) and runs from the tail towards anterior, then parallel to the VPZ, arches and runs dorsally parallel to the APZ, arches again and runs dorsal to the posterior end of the cell, then it runs back up – composed of kinetids with short cilia; some (7) possibly kinetosomes along the tail (Fig 1).

**Multiple, spherical macronuclei** (5-11; 35-50), **arranged in a sickle-shape** (Fig 1,5-8).

## Similar species

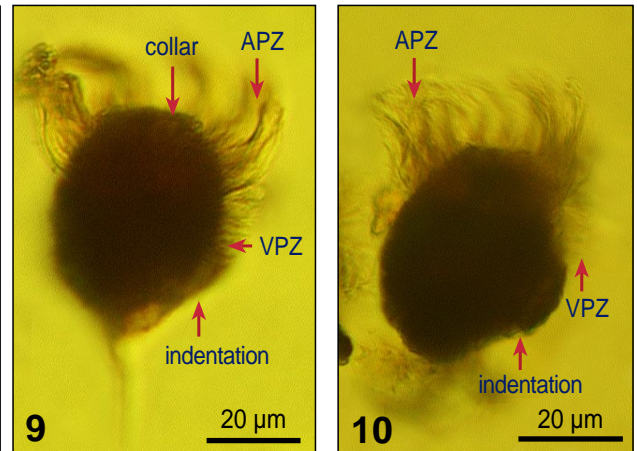
*Tontonia appendiculariformis* (larger, APZ not so obvious), *T. caudata*, *T. poopsia* ( both species are larger).

## List of synonyms

-

## Taxonomical remarks

-



**Fig 9,10** Lugol's fixed cells, ventrolateral view, the tail is lost due to fixation, only the indentation is visible.

## Notes