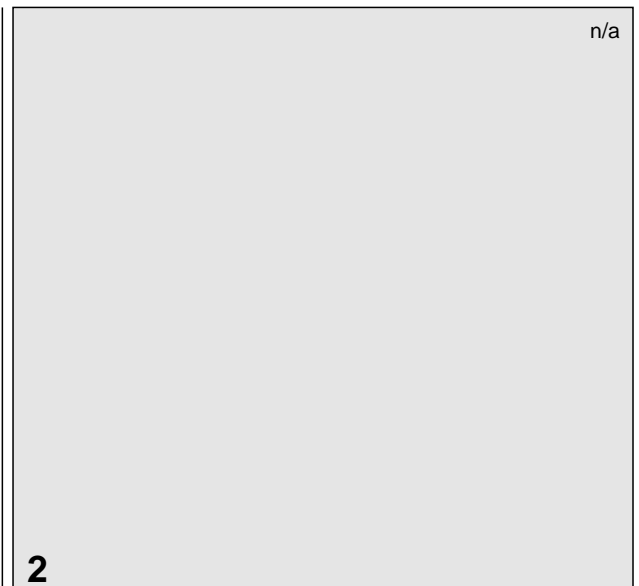
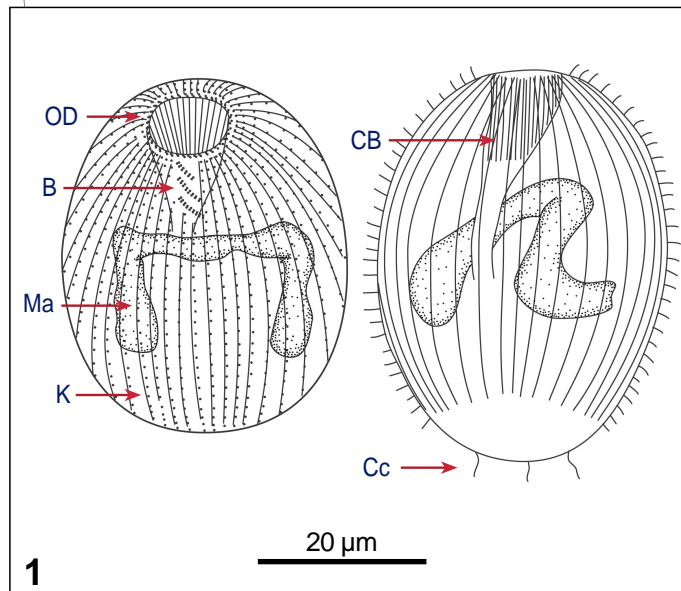


# *Urotricha cyrtotonucleata* Martin & Montagnes, 1993



## Key features

Cell ovoid, anterior slightly truncated, most of the cell with short (3-4 µm long) cilia, posterior 20% of the cell unciliated except for 3 caudal cilia; oral cavity centric, with funnel-shaped cytopharyngeal fibres (basket); one elongate macronucleus, positioned around the cytopharynx

## Measurements

Length: 45 (35-55) µm  
Width: 32 (25-45) µm  
No of OD: 32-36  
No of K: 46-52  
Ma length: 35-50 µm  
Biovolume: 25,000 µm<sup>3</sup>

## Movement

Fast swimming

## Food

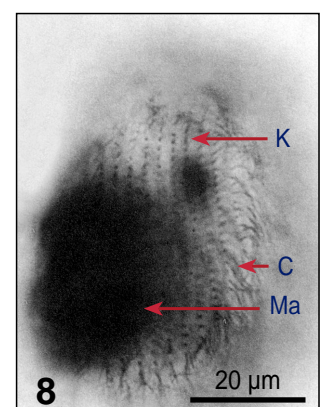
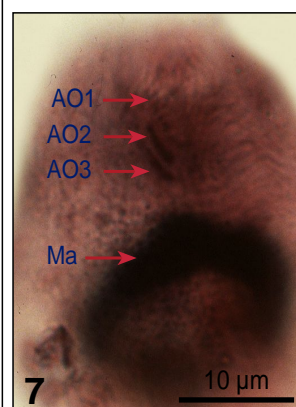
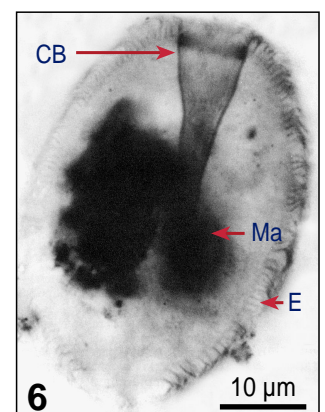
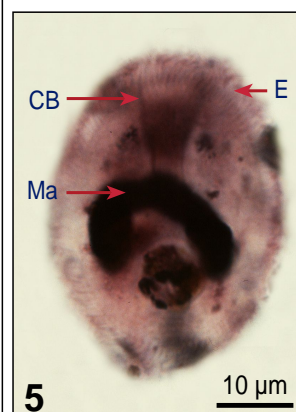
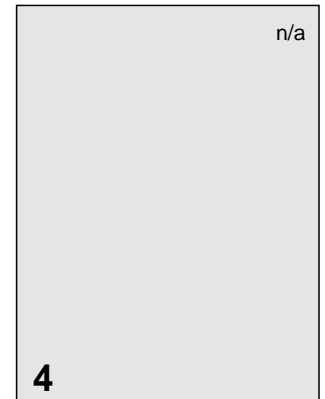
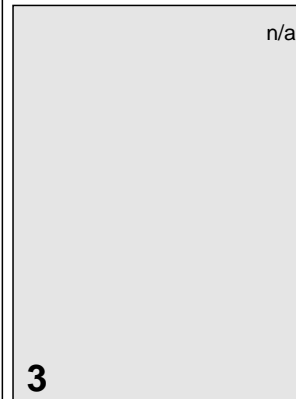
Nanoflagellates

## Ecological data

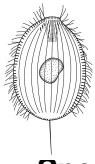
Temperature: 10 °C  
Salinity: 22-25 ‰

## References

Foissner W & Pfister G 1997; Martin AJ & Montagnes DJS 1993



**Fig 1** Line drawings of protargol stained cells, showing kineties, oral structures and nucleus. (**Fig 2,3** Lugol's fixed cells. **Fig 4** Lugol's fixed and DAPI stained cell, illustrating nuclear shape.) **Fig 5-8** Protargol stains: 5,6. Lateral view, showing macronucleus, cytopharyngeal basket, and extrusomes; 7,8. Detail of the cortex, showing the three adoral rows of dikinetids (AO) of the brosse, the somatic kineties (K), and cilia (C).



# *Urotricha cyrtonucleata* Martin & Montagnes, 1993

## Species description

Body ovoid, anterior end slightly truncated, 45 (35-55)  $\mu\text{m}$  long and 32 (25-45)  $\mu\text{m}$  wide.

Oral cavity with **cytopharyngeal fibres (basket, CB)**, 25% of body length (Fig 1,5,6); circumoral ciliature oblique (Fig 1, OD); the brosse consists of **3 adoral rows of dikinetids** (AO), AO1 consists of 2 rows of 5-6 kinetosomes, AO2 and AO3 consist of 2 rows of 8-9 kinetosomes (Fig 1,7); however, this character is difficult to observe and is not visible in Lugol's fixed material.

46-52 somatic kineties of 35-40 monokinetids, 3 of the kineties end prior to the brosse; last 20% of the body unciliated except for **3 caudal cilia** (Fig 1).

**One elongate macronucleus**, positioned around the oral cavity (Fig 1,5,6).

## Similar species

*U. armata* (6 AO), *U. ovata* (less somatic kineties), *U. faurei* (4 AO), *U. sphaerica*, *U. apsheronica* (more somatic kineties), *U. castalia*, *U. puytoraci* (less oral dikinetids), *U. terricola* (soil, smaller, less somatic kineties, more Cc)

## List of synonyms

-

## Taxonomical remarks

*Urotricha cyrtonucleata* has not been described from UK waters yet. However, we find large *Urotricha* species that match these general characteristic features and one of them may be *U. cyrtonucleata*. As observation of the brosse is required to identify these ciliate species, and this structure cannot be seen in Lugol's fixed material, we recommend that *Urotricha* is identified only to the genus level from Lugol's fixed samples.

## Notes